

## UNIT FOR CROWD ACCESS CONTROL

### MS 410

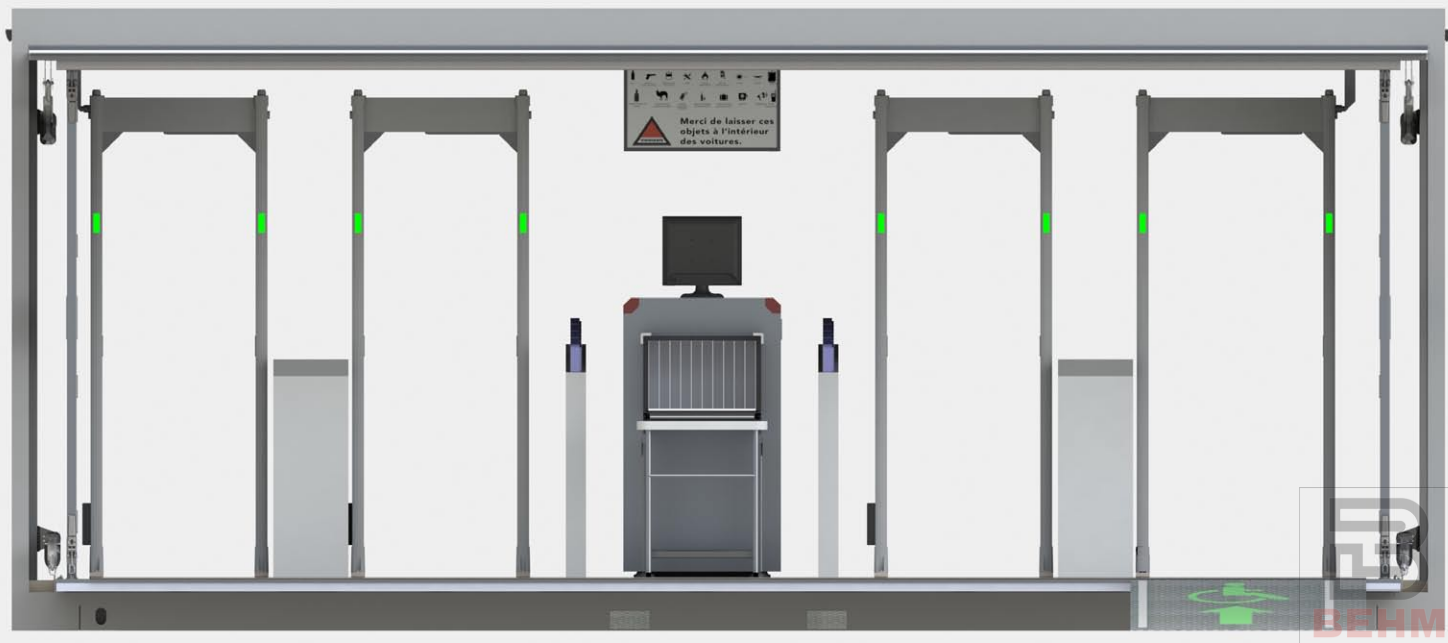


Fig.1 3D illustration - View from the entrance side of the deployed module

All rights reserved - Patented product no. 1756837 and no. 1915780 - Registered trademark in the name of BEHM

### FLOW : 3000

People per hour

#### DIMENSIONS WHEN CLOSED

Length	6000 mm
Width	2435 mm
Height	2920 mm

#### DIMENSIONS WHEN OPENED

Length with ramps	8450 mm
Width	6000 mm
Height	2920 mm

#### EQUIPEMENT

- 4 walk-through metal detectors
- 1 x-ray inspection tunnel
- 1 communication screen

#### ESTIMATED MASS OF THE UNIT

4500 kg (approx.)

### MODULAR 20 FEET

- Electromagnetic shielding provided by unique frame design
- Composite panel used to avoid interference with control equipment
- 2 sleeves per side and 4 lifting rings on the roof for handling by forklift or hydraulic crane.
- 4 ISO maritime container type corners (conforms to 20ft position)
- High quality non-slip floor covering in speckled grey colour
- Easily washable. High usage resistance

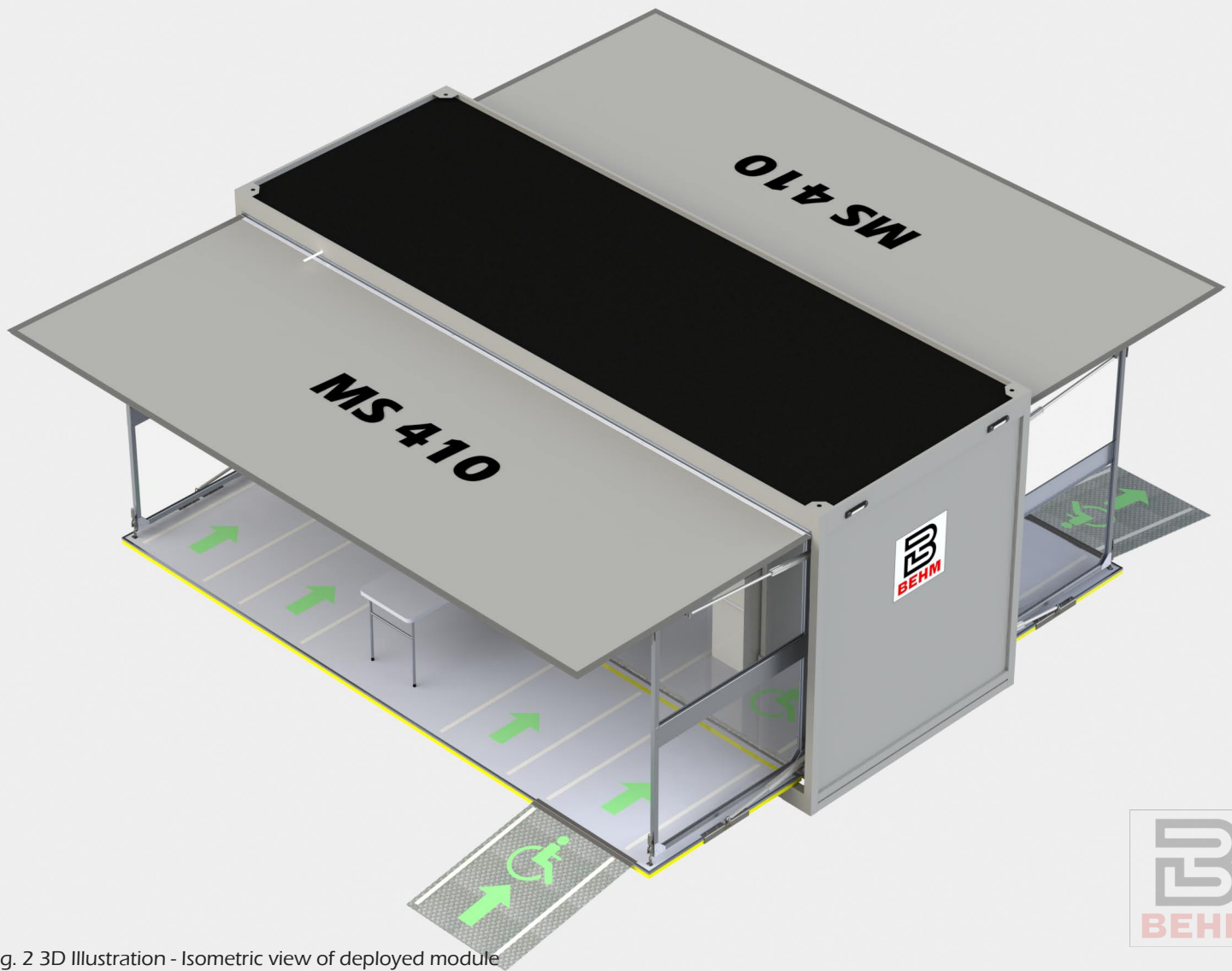


Fig. 2 3D Illustration - Isometric view of deployed module



## PEOPLE CONTROL

- 4 latest generation walk-through multi-zone metal detectors, including one with a passage width of 800 mm in compliance with People with reduced mobility access regulations.

## BAGGAGE CHECK

- An ultra-compact, dual energy x-ray inspection tunnel, dual energy.
- Integration on BEHM stabilisers.
- Tunnel size : 550 mm wide x 360 mm high.
- Capacité du Convoyeur : 150 kg
- 19" colour XVGA monitor
- Operator console: remote
- Penetration : 29 mm
- 2 roller conveyors (entrance / exit)

## EXTENSIONS

- 2 side panels mounted on continuous waterproof hinges
- 2 swivel floors, depth 1720 mm
- 6 removable, height-adjustable feet
- The system is deployed by 8 double-action electric cylinders with stainless steel worm screws
- 4 hinged side panels made of polycarbonate
- Protection against rough weather conditions / high winds
- 2 pivoting aluminium ramps for people with reduced mobility
- 12V safety switches on each moving part

## MARKINGS

Safety markings on all edges  
High visibility floor markings

## CONTROL BOX

With touch screen to control :

- the 2 lifting panels
- the 2 swivel floors
- Interior and exterior LED lighting

## LIGHTING

- 4 exterior LED lighting  
high output 1000 Lumens/ IP66 inclined 30°
- 12 touch screen controlled LED strips



Fig. 3 3D Illustration - Top view of deployed module

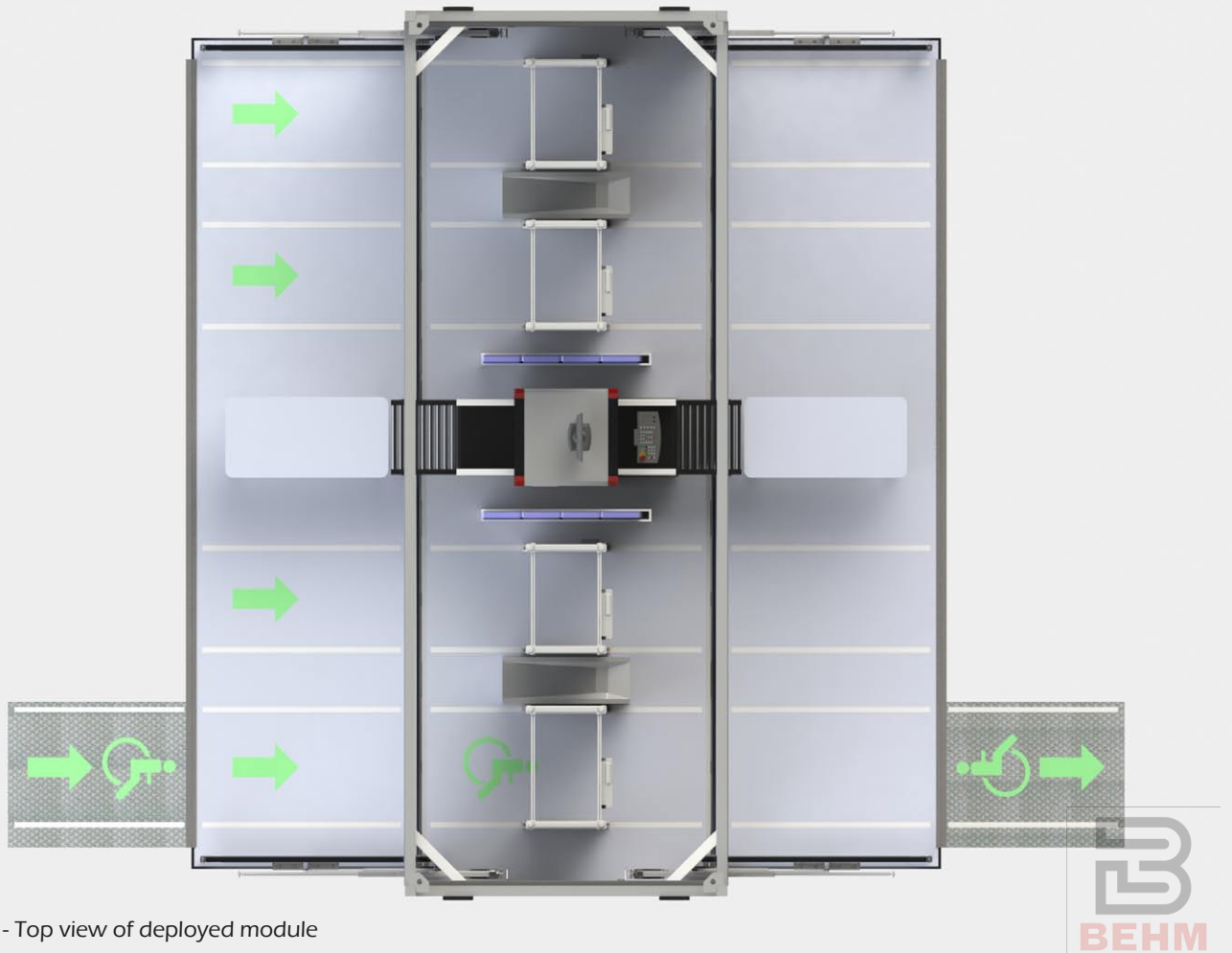


Fig. 4 3D Illustration - Top view of deployed module



Fig. 5 3D illustration - View of the exit side

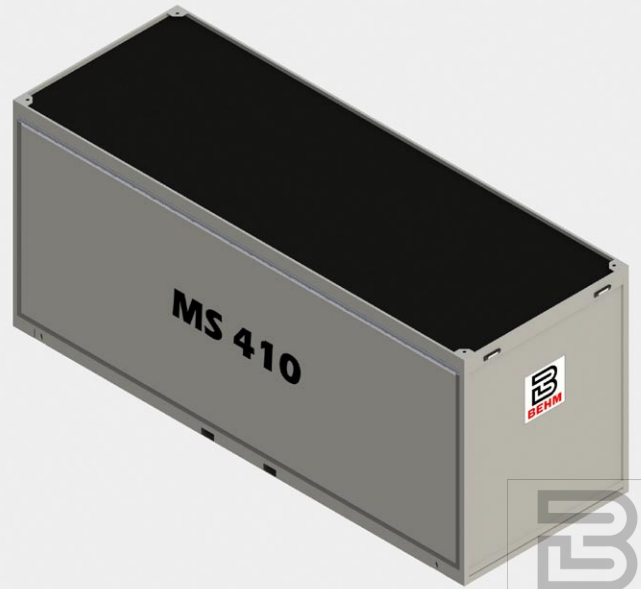


Fig. 6 3D illustration - Closed view



## POWER SUPPLY

- Electrical box accessible from the outside
- 15 m extension cord with adapter
- Voltage presence indicator
- 30 mA differential protection
- 1 lithium battery for opening/lighting
- 1 battery charger
- Power supply from a 16 A waterproof socket located in the enclosure



## COMMUNICATION

- 1 Full HD 32" LED screen located in the entrance area



## ACCESSORIES

- 2 folding tables
- 1 fire extinguisher with stand
- 8 plastic trays 300 x 400 x 50 mm
- 2 plastic tray return guides
- 2 passageway for personal objects
- Specific signs and markings in accordance with the regulations in place



MOBIL SECURITY GOT THE 'GRAND EVENEMENTS' LABEL (INCLUDING FOR PARIS 2024 OLYMPIC GAMES) BY THE 'SECURITY INDUSTRIES' STRATEGIC COMMITTEE



**CONTACT**  
 Email : [societe@behm.fr](mailto:societe@behm.fr)  
 Telephone : +33(0)3 82 88 14 69

[www.behm.fr](http://www.behm.fr)





## OPTIONS

REFERENCE	DESCRIPTION	VISUALS
<b>MS-BAT</b>	Inverter + battery backup for a minimum of 30 min of autonomous operation	
<b>MS-DCO</b>	Frame colour according to customer's choice (RAL code)	
<b>MS-COV</b>	Personalisation of the side panels (photos, texts etc...)	
<b>MS-VI1</b>	Video surveillance package, 3 cameras inside, 2 outside, recorder, TV control	
<b>MS-VI2</b>	Telescopic mast for long distance video surveillance	
<b>MS-PP2</b>	Automatically deployable advertising panel on the roof with a surface area of 8 m <sup>2</sup>	
<b>MS-CP2</b>	3D stereoscopic sensor for bi-directional counting Real time remotely accessible information	



**CONTACT**  
 Email : [societe@behm.fr](mailto:societe@behm.fr)  
 Telephone : +33(0)3 82 88 14 69

[www.behm.fr](http://www.behm.fr)

